

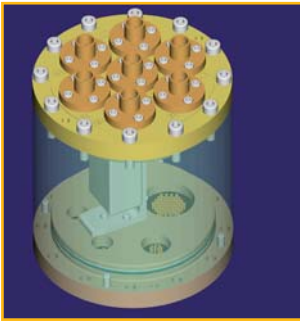


**M**  
**MENCK**

**MLM**

an **ACTEON** company

**YOUR SUCCESS – BASED ON MENCK**

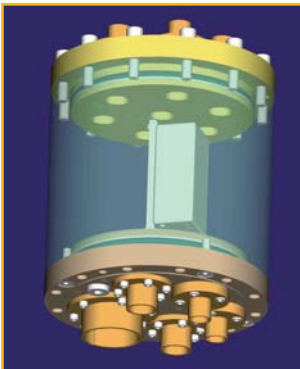


## MENCK Lifecycle Monitoring (MLM)

Linked with the MENCK Hydraulic Controller (MHC 21) the MENCK Lifecycle Monitoring (MLM) system is a smart electronic assistant gathering and storing information located in the hammer junction box.

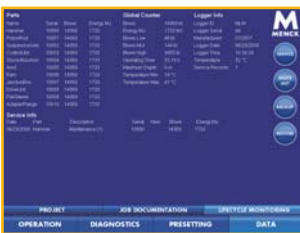
MLM tracks various information including; hammer blows, energy used, date and time as well as special entries such as maintenance performed.

This information is used to create tailored reports specific to the hammer. Communication with the MHC 21 ensures a clear record of hammer activity to outline appropriate and targeted maintenance ensuring long lasting performance and reducing costly downtime.



## Features

- Detailed activity log of blow counts and energy for every major hammer part – enabling preventive or targeted maintenance
- Detailed log at every maintenance interval for clear maintenance records
- Contains vital hammer information such as individual part serial numbers, assembly instructions and history
- Contains hammer parameters for automatic MHC 21 setup to prevent operating errors and simplify the operation of the hammer system
- Convenient user interface through integrated in the MHC 21 or through the MLM stand alone access tool for Windows PCs (standard accessory)
- Service report generation in various export formats and printouts
- Data retention for 40 years of hammer life
- Rugged electronics to withstand the harsh hammer environment & accelerations
- Web portal access capable



MENCK GmbH  
 Am Springmoor 5a  
 24568 Kaltenkirchen  
 Germany  
 Tel. +49 (0) 4191-911-0  
 Fax +49 (0) 4191-911-100  
 info@menck.com  
 www.menck.com